

1 - 2 - 3 FRESE LA CEREREA CLIENTULUI

SPECIAL PROFILE CUTTERS

001

MAN MEC

| Codice | D. | B. | d. | Z |
|------------|-----|-----|-------------|---|
| HW | mm. | mm. | mm. | |
| 001 H 1420 | 140 | 20 | 30-35-40-50 | 4 |
| 001 H 1430 | 140 | 30 | 30-35-40-50 | 4 |
| 001 H 1440 | 140 | 40 | 30-35-40-50 | 4 |
| 001 H 1450 | 140 | 50 | 30-35-40-50 | 4 |
| 001 H 1460 | 140 | 60 | 30-35-40-50 | 4 |
| 001 H 1470 | 140 | 70 | 30-35-40-50 | 4 |
| 001 H 1480 | 140 | 80 | 30-35-40-50 | 4 |
| 001 H 1620 | 160 | 20 | 30-35-40-50 | 4 |
| 001 H 1630 | 160 | 30 | 30-35-40-50 | 4 |
| 001 H 1640 | 160 | 40 | 30-35-40-50 | 4 |
| 001 H 1650 | 160 | 50 | 30-35-40-50 | 4 |
| 001 H 1660 | 160 | 60 | 30-35-40-50 | 4 |

002

MAN MEC

| Codice | D. | B. | d. | Z |
|------------|-----|-----|-------------|---|
| HW | mm. | mm. | mm. | |
| 002 H 1420 | 140 | 20 | 30-35-40-50 | 4 |
| 002 H 1430 | 140 | 30 | 30-35-40-50 | 4 |
| 002 H 1440 | 140 | 40 | 30-35-40-50 | 4 |
| 002 H 1450 | 140 | 50 | 30-35-40-50 | 4 |
| 002 H 1460 | 140 | 60 | 30-35-40-50 | 4 |
| 002 H 1470 | 140 | 70 | 30-35-40-50 | 4 |
| 002 H 1480 | 140 | 80 | 30-35-40-50 | 4 |
| 002 H 1620 | 160 | 20 | 30-35-40-50 | 4 |
| 002 H 1630 | 160 | 30 | 30-35-40-50 | 4 |
| 002 H 1640 | 160 | 40 | 30-35-40-50 | 4 |
| 002 H 1650 | 160 | 50 | 30-35-40-50 | 4 |
| 002 H 1660 | 160 | 60 | 30-35-40-50 | 4 |

003

MAN MEC

| Codice | D. | B. | d. | Z |
|------------|-----|-----|-------------|---|
| HW | mm. | mm. | mm. | |
| 003 H 1420 | 140 | 20 | 30-35-40-50 | 4 |
| 003 H 1430 | 140 | 30 | 30-35-40-50 | 4 |
| 003 H 1440 | 140 | 40 | 30-35-40-50 | 4 |
| 003 H 1450 | 140 | 50 | 30-35-40-50 | 4 |
| 003 H 1460 | 140 | 60 | 30-35-40-50 | 4 |
| 003 H 1470 | 140 | 70 | 30-35-40-50 | 4 |
| 003 H 1480 | 140 | 80 | 30-35-40-50 | 4 |
| 003 H 1620 | 160 | 20 | 30-35-40-50 | 4 |
| 003 H 1630 | 160 | 30 | 30-35-40-50 | 4 |
| 003 H 1640 | 160 | 40 | 30-35-40-50 | 4 |
| 003 H 1650 | 160 | 50 | 30-35-40-50 | 4 |
| 003 H 1660 | 160 | 60 | 30-35-40-50 | 4 |
| 003 H 2020 | 200 | 20 | 30-35-40-50 | 4 |
| 003 H 2030 | 200 | 30 | 30-35-40-50 | 4 |
| 003 H 2040 | 200 | 40 | 30-35-40-50 | 4 |
| 003 H 2050 | 200 | 50 | 30-35-40-50 | 4 |
| 003 H 2060 | 200 | 60 | 30-35-40-50 | 4 |

FRESE IN HW SALDATO SPECIALI A DISEGNO

TABELLA 1 PROFILI SEMPLICI

TABELLA 2 PROFILI MEDI

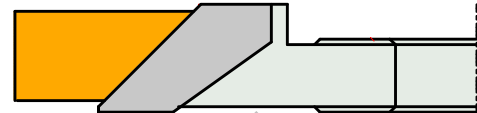
TABELLA 3 PROFILI COMPLESSI

CUTTERS IN HW WELDED ON DRAWING

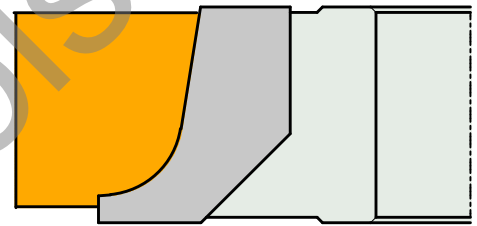
TABLE 1 SIMPLE PROFILES

TABLE 2 MEDIUM PROFILES

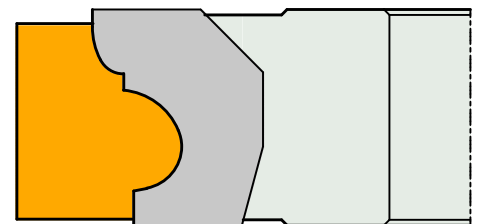
TABLE 3 COMPLICATED PROFILES



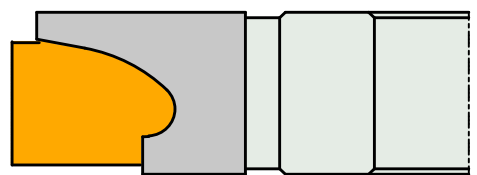
TAB. 1



TAB. 2



TAB. 3



TAB. 3